

DWG FILE PATH/NAME
 SCALE 1"=60'
 DATE 5/2004
 REMINGTON & VERWICK ENGINEERS
 232 KING'S HIGHWAY EAST HADDONFIELD, N.J. 08033
 (956) 795-9595 FAX (956) 795-1882 WEB SITE ADDRESS: WWW.RVE.COM

EDWARD VERWICK
 NJ PROFESSIONAL ENGINEER NO. 25091
 DATE: 9-27-04

TERENCE M. VOGT
 NJ PROFESSIONAL ENGINEER NO. 33773
 DATE: 9-27-04

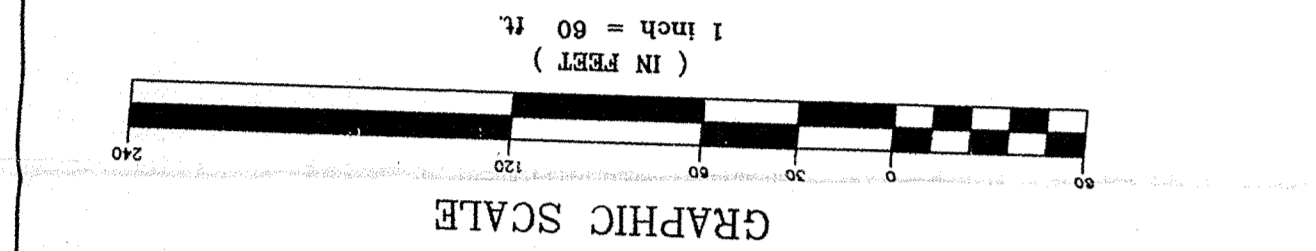
SAMPLE LOCATION-PLAN
 CITY OF BRIDGETON
 CUMBERLAND COUNTY, NEW JERSEY

NO. REVISION DATE BY CHK. BY

PLANS WHICH DO NOT BEAR AN EMPRESSED SEAL ARE NOT VALID.

ANY REVISIONS MUST BE INDICATED BY A NUMBERED CIRCLE OR OTHER MEANS AND THE REVISIONS MUST BE INITIALED AND DATED BY THE ENGINEER.

ALL DOCUMENTS PREPARED BY REMINGTON & VERWICK ENGINEERS ARE HEREBY REPRESENTED TO BE CORRECT AND TO BE SUBJECT TO THE TERMS AND CONDITIONS OF THE PROFESSIONAL ENGINEERING CONTRACT AND TO BE SUBJECT TO THE TERMS AND CONDITIONS OF THE PROFESSIONAL ENGINEERING CONTRACT AND TO BE SUBJECT TO THE TERMS AND CONDITIONS OF THE PROFESSIONAL ENGINEERING CONTRACT.



REVISION

NO.	REVISION	DATE	BY	CHK.	BY

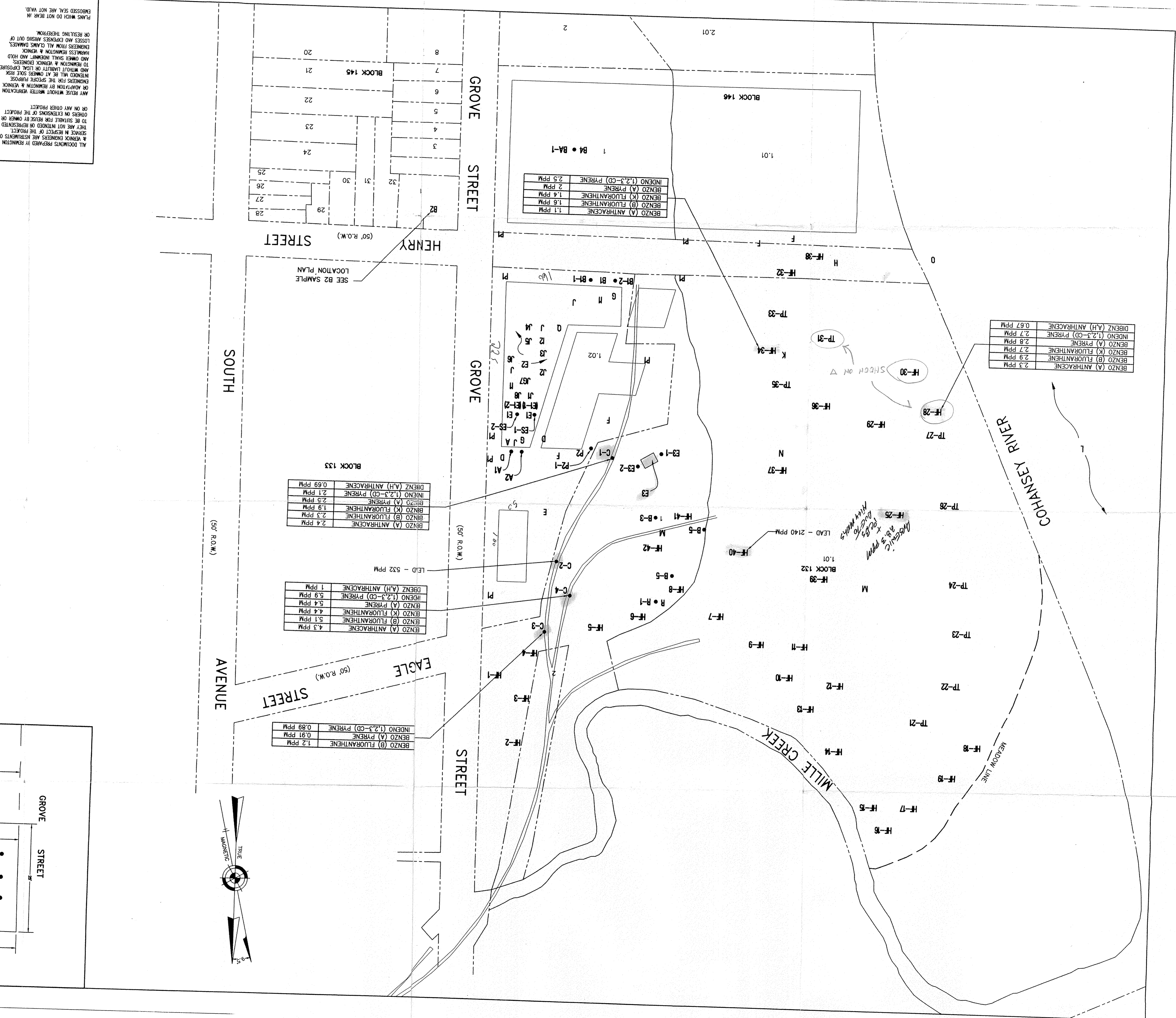
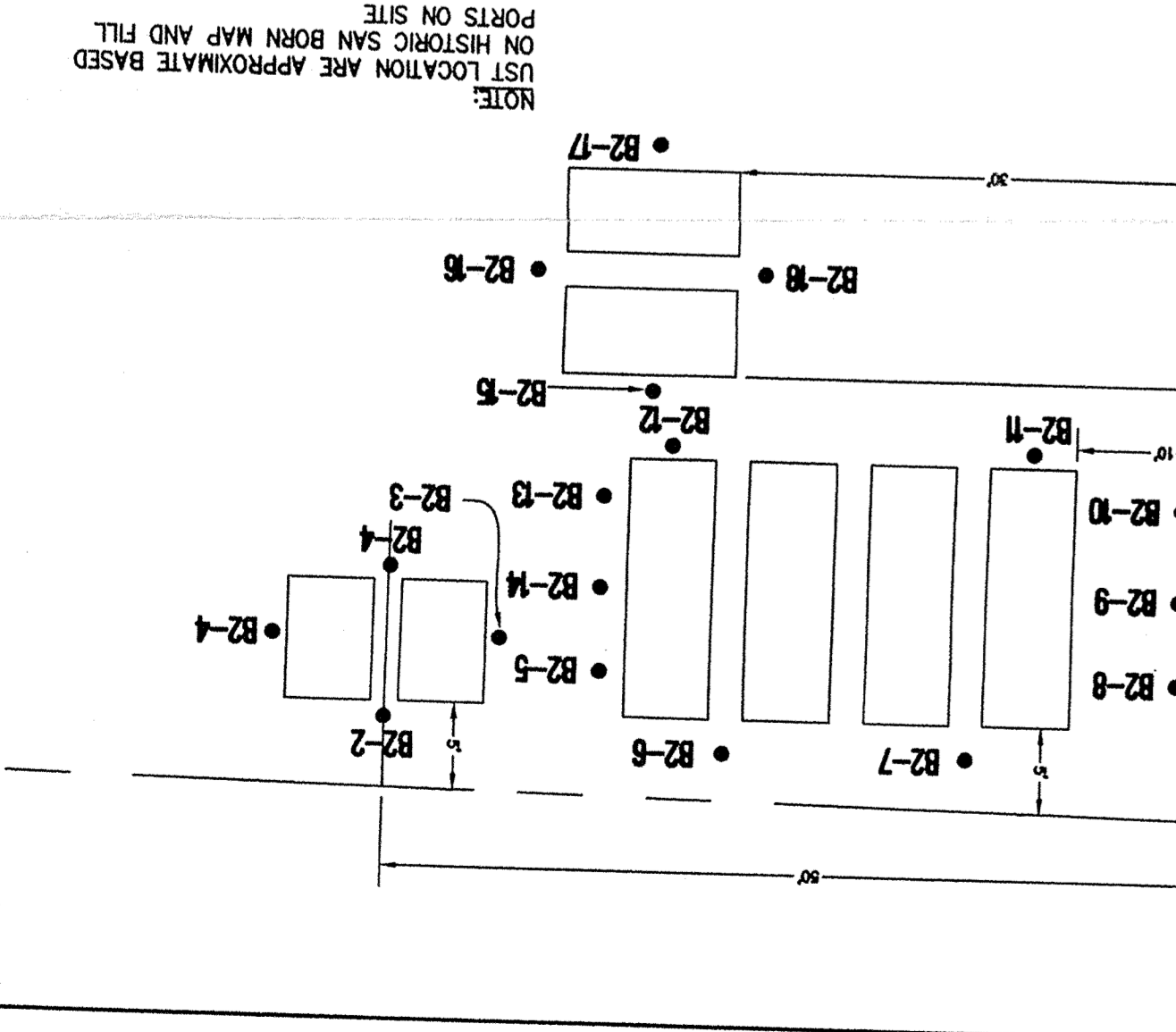
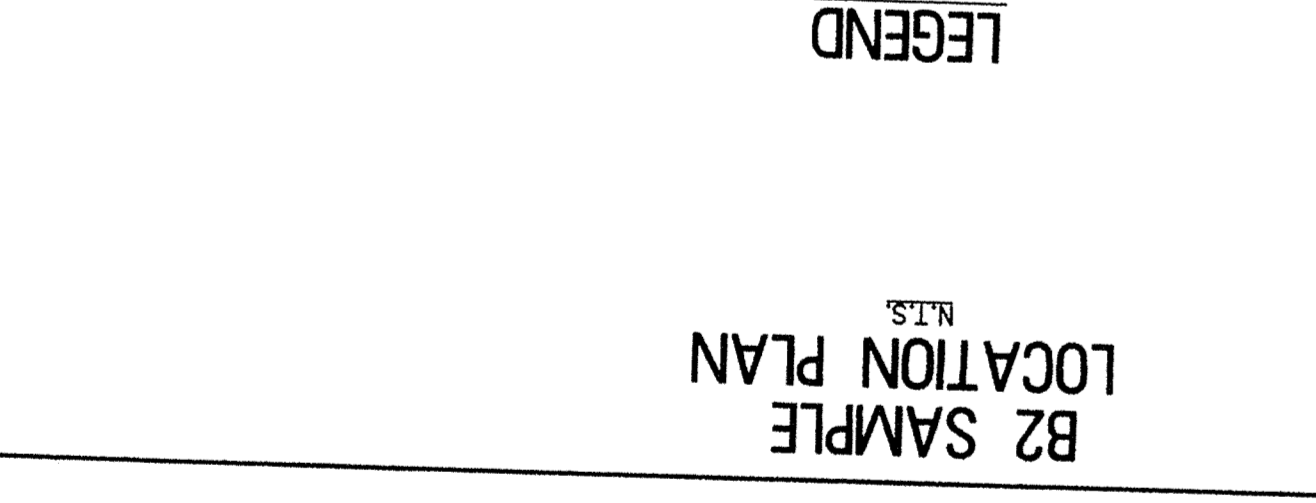
NOTES

1. PLAN IS BASED ON TAX MAP HISTORIC SANBORN MAPS & AERIAL PHOTOGRAPHS.
2. PLAN IS FOR PRELIMINARY ASSESSMENT.
3. SITE INVESTIGATION PURPOSES ONLY.

CONCENTRATIONS BELOW THE N.J.R.D.C.S.C. ALL OTHER COMPOUNDS WERE DETECTED AT THOSE CONCENTRATIONS SHOWN ARE CONTAMINANT CONCENTRATIONS SHOWN ARE

LEGEND

A	ABOVE GROUND STORAGE TANKS
B1, B2, B3, B4, B5	RAIL SPUR
C	PUMP STATION
D	PUMP STATION
E1, E2	PTS
F	TRUCK LOADING AREA
G	DRUM STORAGE AREA
H	DUMPSITE
I, J, K	CHEMICAL STORAGE CLOUD
L	FLOOR DRAIN
M	STORM SEWER COLLECTIONS SYSTEM
N	SURFACE WATER BODY
O	LANDFILL
P1, P2	INCINERATOR
Q	OPEN PIPE DISCHARGE
R	TRANSFORMERS
S	UNDERGROUND PIPING
T	SCALE
U	SAMPLE/TEST PIT LOCATION



NOTE: LIST LOCATION ARE APPROXIMATE BASED ON HISTORIC SAN BORN MAP AND FILL PORTS ON SITE.